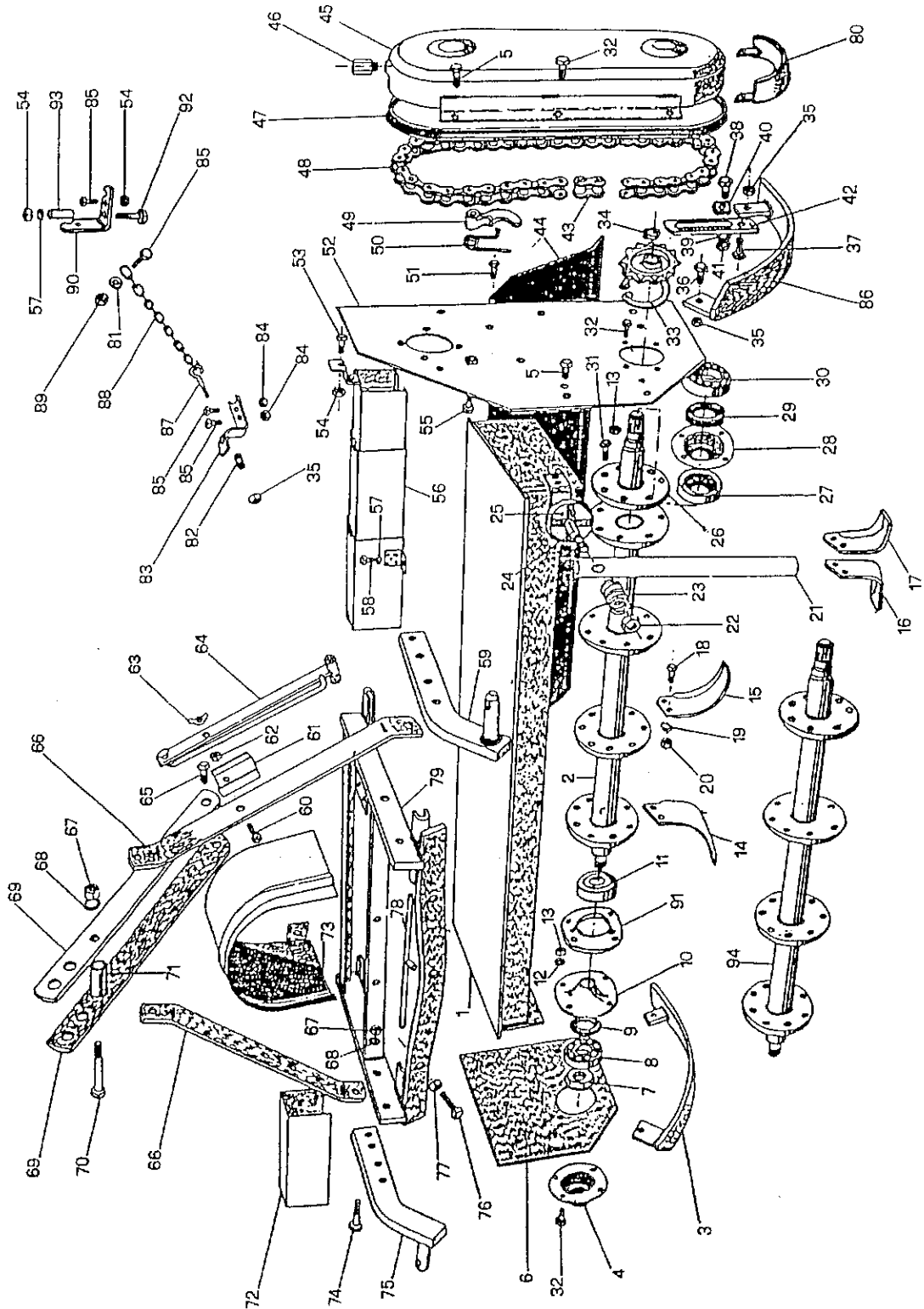


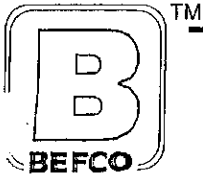
Rotary Tiller
Main Frame
11-3 (50, 58, 66, 74) - 232

GR11
SR3

SR 3

Julie

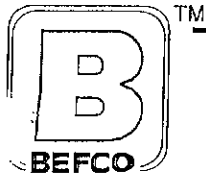




Rotary Tiller
Main Frame
11-3 (50, 58, 66, 74) - 232

GR11
SR3

ITEM	PART #	DESCRIPTION	QTY.
1	013 7002	FRAME 350	1
	023 7002	FRAME 358	1
	033 7002	FRAME 366	1
	043 7002	FRAME 374	1
2	043 7081	ROTOR 374	1
3	013 7051	SKID-RIGHT	1
4	003 0091 -	COVER - OUTER RIGHT	1
5	000 1241	BOLT 10 X 25	11
6	003 7012	RIGHT SIDE PANEL	1
7	003 7098	SAFETY NUT D.35 X 1.5	1
8	001 2149	BEARING 6208	1
9	003 4159	OIL SEAL 45.60.10	1
10	003 0092 -	COVER <i>INNER</i>	1
11	003 7085	DIRT SHIELD-RIGHT	1
12	000 1011	WASHER D.10	25
13	000 1010	NUT D.10	25
14	000 1071D	"C" BLADE RIGHT	-
15	000 1071S	"C" BLADE LEFT	-
16	000 7288D	"L" KNIFE RIGHT	-
17	000 7288S	"L" KNIFE LEFT	-
18	000 1073	BOLT 12 x 35	-
19	000 1077	WASHER D.12	-
20	000 1075	NUT D.10	-
21	003 7444	STAND	1
22	003 0358	NUT D.14	1
23	000 1176	SPRING	1
24	003 0301	BOLT 14 X 80	1
25	003 7452	STAND-HITCH	1
26	003 7125	FLANGED PIVOT-LEFT	1
27	003 7128	DIRT SHIELD-LEFT	1
28	003 7145	FLANGE-LOWER-LEFT	1
29	003 8155	OIL SEAL 52.72.10	1
30	000 1085	BEARING 6309	1
31	000 7087	BOLT 12 X 45	8
32	000 1008	BOLT 10 X 30	14
33	000 1087	SNAP RING D.100 INNER	1
34	000 1114	SNAP RING D.42 OUTER	1
35	001 3345	NUT D.12	5
36	000 7255	BOLT 12 X 35	2
37	000 8153	BOLT 12 X 40	2
38	000 1105	BOLT 12 X 55	2
39	003 0066	THREADED WASHER	2
40	003 7057	LOCKING PLATE	2
41	000 3038	NUT D.12	2
42	003 7054	SKID ADJUSTING ARM	2
43	003 0147	CHAIN LINK ASA 100	1
44	013 7383	REAR SHIELD 350	1
	023 7383	REAR SHIELD 358	1
	033 7383	REAR SHIELD 366	1
	043 7383	REAR SHIELD 374	1
45	003 7031	CHAIN CASE COVER	1
46	000 1107	BREATHER CAP	1
47	003 7035	GASKET	1



Rotary Tiller
Main Frame
11-3 (50, 58, 66, 74) - 232

GR11
SR3

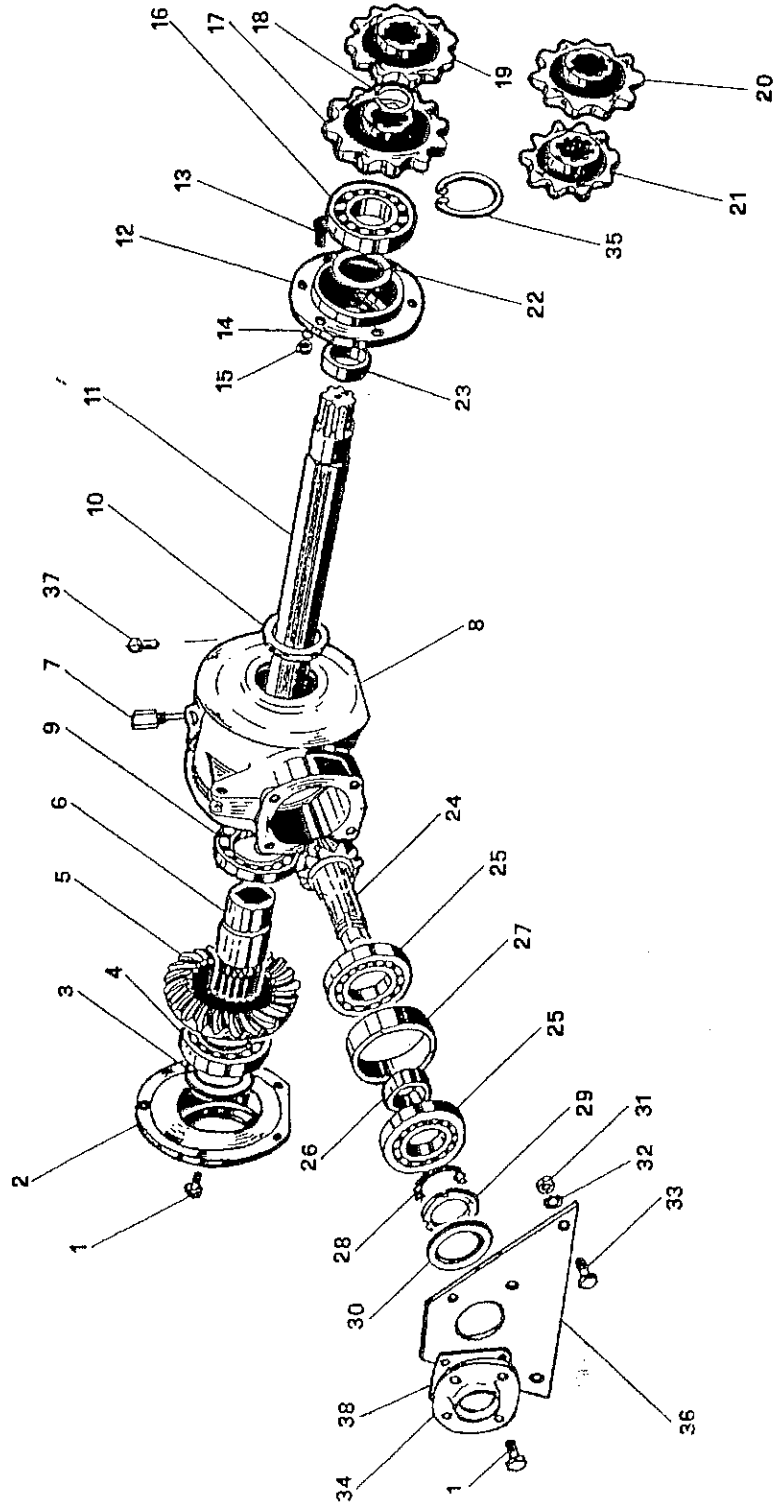
ITEM	PART #	DESCRIPTION	QTY.
48	000 1120	CHAIN ASA 100 X 36	1
49	000 1115	CHAIN TENSIONER	1
50	003 7184	CHAIN TENSIONER SPRING	1
51	003 7386	BOLT 18 X 80	2
52	003 7023	LEFT SIDE PANEL	1
53	000 1101	BOLT 10 X 45	1
54	000 1279	NUT D.10	2
55	000 1102	BOLT 14 X 60	2
56	013 7328	HEX SHAFT PROTECT 350-358	1
	023 7328	HEX SHAFT PROTECT 366-374	1
57	000 2034	FLAT WASHER D.10	3
58	000 6349	BOLT 10 X 20	2
59	023 7353	LOWER HITCH PLATE LEFT	1
60	000 8037	BOLT 8 X 50	1
61	003 0339	LOCKING COVER	1
62	000 1806	NUT D.8	1
63	000 1807	NUT D.8	1
64	003 0844	SHIFTING ARM	1
65	003 0277	BOLT 14 X 60	1
66	003 7364	TOP HITCH SUPPORT	2
67	000 1019	NUT D.14	6
68	000 1020	WASHER D.14	6
69	003 7365	TOP HITCH ARM	2
70	009 0226	BOLT 14 X 110	1
71	000 1254	SPACER	1
72	023 0260	RIGHT PROTECTION 350	1
	033 0260	RIGHT PROTECTION 358	1
	043 0260	RIGHT PROTECTION 366	1
	053 0260	RIGHT PROTECTION 374	1
73	003 7471	PROTECTIVE COVER	1
74	002 6187	BOLT 14 X 70	4
75	013 7353	LOWER HITCH PLATE RIGHT	1
76	003 2371	BOLT 14 X 55	2
77	000 1177	NUT D.14	2
78	003 7345	SPINDLE	1
79	003 7311	SLIDING FRAME	1
80	003 7043	CHAIN PAN PROTECTOR	1
81	000 2265	FLAT WASHER D.12	1
82	001 3341	SPRING	1
83	003 7392	CHAIN HITCH	1
84	000 1279	NUT D.10	3
85	003 3176	BOLT 10 X 25	4
86	023 7051	SKID-LEFT	1
87	002 1303	HOOK	1
88	000 7257	CHAIN	1
89	003 0156	NUT D.10	1
90	003 7404	CHAIN HITCH	1
91	001 0073	COVER	1
92	002 6185	BOLT 10 X 90	1
93	002 1285	SPACER	1
94	023 5281	ROTOR 350	1
	033 5281	ROTOR 358	1
	043 5281	ROTOR 366	1

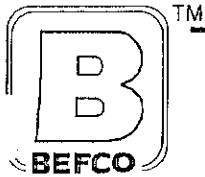


TM

Rotary Tiller
Gearbox
11-3 (50, 58, 66, 74) - 232

GR11
SR3





Rotary Tiller
Gearbox
11-3 (50, 58, 66, 74) - 232

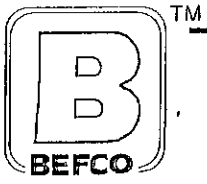
GR11
SR3

ITEM	PART #	DESCRIPTION	QTY.
1	000 1046	BOLT 10 X 20	9
2	003 7225	COVER - RING GEAR	1
3	000 1639	OIL SEAL 60.80.10	1
4	000 1139	BEARING 6212	1
5	003 7236	RING GEAR	1
6*	003 7217	SHAFT COUPLING	1
7	000 1158	DIPSTICK	1
8	003 7214	GEARBOX	1
9	000 1631	BEARING 16013	1
10	000 7805	OIL SEAL 65.85.10	1
11	013 7208	HEXAGONAL SHAFT 350	1
	023 7208	HEXAGONAL SHAFT 358	1
	033 7208	HEXAGONAL SHAFT 366	1
	043 7208	HEXAGONAL SHAFT 374	1
12	003 7195	TOP SHAFT FLANGE	1
13	000 1008	BOLT 10 X 30	5
	000 1101	BOLT 10 X 45	1
14	000 1011	WASHER D.10	6
15	000 1010	NUT D.10	6
16	000 1085	BEARING 6309	1
17	000 1111	SPROCKET Z12	1
18	000 1114	SNAP RING D.42 OUTER	1
19	000 1112	SPROCKET Z11 -	1
20	003 7166	SPROCKET Z15 -	1
21	000 1110	SPROCKET Z14	1
22	000 1084	OIL SEAL 55.72.10	1
23	000 3049	SPACER	1
24	003 7237	PINION GEAR	1
25	000 1148	BEARING 6308	2
26	001 5104	SPACER - INNER	1
27	001 5105	SPACER - OUTER	1
28	000 7827	LOCKWASHER M8	1
29	000 7826	SAFETY NUT M8	1
30	003 7248	OIL SEAL 35.60.10	1
31	000 1226	NUT D.14	2
32	000 1104	WASHER D.14	2
33	000 7552	BOLT 14 X 50	2
34	003 0092	COVER	1
35	000 1087	SNAP RING D.100 INNER	1
36	003 7253	METAL COVER	1
37	001 9048	BOLT 16 X 35	1
38	003 7258	GASKET	1
	050 0524	GEARBOX COMPLETE	-

*6

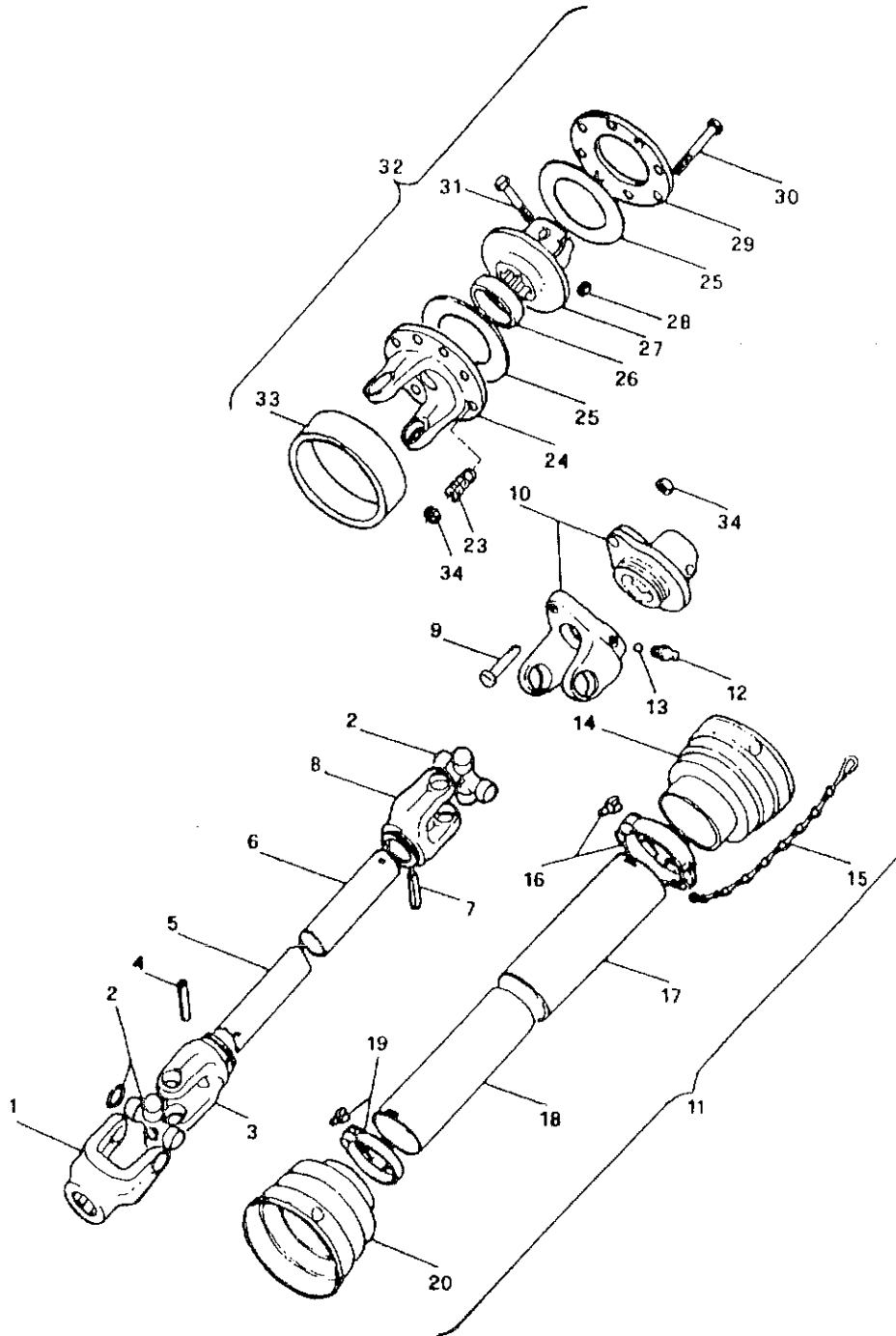
000 7568

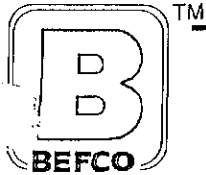
Start Coupling
On Side 16 Spine



Rotary Tiller
PTO
11-3 (50, 58, 66, 74) - 232

GR11
SR3





Rotary Tiller
PTO
11-3 (50, 58, 66, 74) - 232

GR11
SR3

ITEM	PART #	DESCRIPTION	QTY.
1	026 001E	YOKE TRACTOR END 1 3/8-6	1
2	016 130E	CROSS & BEARING 30.2 X 92	2
3	016 029E	YOKE MALE	1
4	000 011E	ROLL PIN M10 X 65	1
5	160 109E	SHAFT MALE	1
6	160 209E	SHAFT FEMALE	1
7	000 016E	ROLL PIN M10 X 70	1
8	016 028E	YOKE FEMALE	1
9	000 506E	BOLT M8 X 60	1
10	260 001E	YOKE IMPLEMENT END 1 3/8-6	1
11	260 209E ✓	SHIELD COMPLETE	1
12	000 021E	GREASE FITTING M10 X 1	1
13	000 023E	BALL BEARING	19
14	016 023E	GUARD CONE OUTER	1
15	016 025E	SAFETY CHAIN	2
16	016 016E	LOCKING RING OUTER	1
17	161 109E	TUBE FEMALE	1
18	161 209E	TUBE MALE	1
19	016 015E	LOCKING RING INNER	1
20	016 022E	GUARD CONE INNER	1
23	014 022E	SPRING	8
24	016 039E	YOKE	1
25	015 019E -	FRICTION DISK <i>(3" I.D.) larger okay held by flange no longer make any</i>	1
26	015 020E	SPACER	1
27	015 018E	BODY FRICTION CLUTCH 1 3/8-6	1
28	001 3345	NUT-SELF LOCKING M12	1
29	015 021E	OUTER FLANGE	1
30	000 501E	BOLT M10 X 80	8
31	000 502E	BOLT M12 X 65	1
32	261 001E	YOKE COMPLETE SLIP CLUTCH 1 3/8-6	1
33	015 022E	DIRT SHIELD	1
34	001 4106	NUT-SELF LOCKING M10	8
	948 402B	*SHEAR PIN PTO COMPLETE-T60	-
	948 403B	*SLIP CLUTCH PTO COMPLETE-T60	-
	026 004E	PUSH PIN SET (PRESS IN RETAINER)	2
	026 009E	PUSH PIN SET ("C" CLIP RETAINER)	2